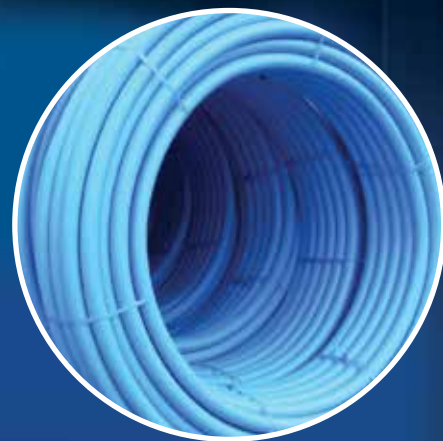


# PIPELIFE

## PRODUCT GUIDE



# PROVIDING SAFE, HEALTHY AND CAREFREE LIVING FOR 50 YEARS



## THE STORY OF PIPELIFE

**Pipelife is one of Europe's leading producers of plastic pipe systems. Pipelife has grown to become a key supplier of innovative products in the plumbing, water distribution, gas distribution and renewable energy industrial sectors. Quality and innovation continue to be the terms that define our philosophy and this is reflected in the range of products and systems that we manufacture to this day.**

Employing in excess of 3,700 people in 28 manufacturing facilities across 24 countries, Pipelife is a company with annual revenues of €1bn a year. Pipelife is a wholly owned subsidiary of the Wienerberger Group, with group revenues of over €4bn per year and 16,000 employees worldwide.

Pipelife UK, located in Corby, Northamptonshire specialises in providing plastic pipe systems to the UK residential and commercial building sectors. Drawing on over 50 years of plastic pipe manufacturing experience, Pipelife UK is an industry leader in the production and development of high quality PEX, Polybutylene, PE-RT and HDPE plumbing systems.

All of our pipe is manufactured under the ISO9001;2015 Quality Management System. Pipelife guarantees the pipe for 50 years which is vital when the pipe is being buried within the floor structure for the lifetime of the building.

For more information about Pipelife please visit our website at [www.pipelife.co.uk](http://www.pipelife.co.uk) or our corporate website [www.pipelife.com](http://www.pipelife.com)



# HOW TO ORDER /DELIVERY

Call The Pipelife UK Sales Office on 0845 2419490,  
Fax 0845 2419 491  
Email [info@pipelife.com](mailto:info@pipelife.com)

**We only accept orders via email or fax.  
All orders must state:**

- Catalogue product number
- Date order required
- Quantity required
- Product description
- Delivery method
- Delivery address
- Express delivery if required at extra cost
- Your purchase order number (if ordering)
- Invoice address

Please note that minimum order values apply.  
Bag/Pack quantities cannot be split.

For further assistance, call your local Pipelife Sales Manager

- Northern Ireland - 07793 810517
- North/Scotland - 07909 113007
- Midlands / South Wales - TBC
- South - 07872 899615

**DID YOU KNOW  
that in 2022 alone  
there was**

**855,608  
KILOMETRES**

**of Pipelife Pipe  
installed across  
the globe!**



**That's enough  
pipe to go  
THE MOON  
and back!**



# EASY-LAY

Plumbing & Heating Pipe

## Ultra Flexible Pipe



## MAKING LIFE EASIER FOR INSTALLERS

Pipelife's "Easy-Lay" Polybutylene plumbing & heating pipe has lie flat technology which ensures ease of installation. Available in 10mm, 15mm, 22mm & 28mm sizes in both white and grey colours, this extensive range of pipe offers installers the solutions they need. With full BS7291-Class S and WRAS approvals, specifiers & installers can have full confidence in the quality and reliability of this range.

**1. Ultra-Flexible** - Our Easy-Lay Pipe is more flexible than other pipes allowing you to manoeuvre the pipe into awkward spaces with complete ease. It's quick and easy to uncoil and the flexible material makes cabling through joists a simple task.

**2. Barrier Layer** - Our Easy-Lay pipe is made up of 5 layers.

**3. Full BS7291- Class S and WRAS approvals** - and comes with our market leading 50 year guarantee.

**4. Compatible** - Easy-Lay pipe is compatible with other BS7291 specified systems.


**5. Available in** - 10mm, 15mm, 22mm & 28mm sizes in both white and grey colours.



#### EASY-LAY POLYBUTYLENE BARRIER PIPE (WHITE)

	CODE	DESCRIPTION	QTY
	3096200000	PB 25m coil 10mm	1
	3096200010	PB 50m coil 10mm	1
	3096200020	PB 100m coil 10mm	1
	3096200060	PB 25m coil 15mm	1
	3096200070	PB 50m coil 15mm	1
	3096200080	PB 100m coil 15mm	1
	3096200200	PB 25m coil 22mm	1
	3096200210	PB 50m coil 22mm	1
	3096200090	PB 3m length 15mm	20
	3096201136	PB 3m length 22mm	20
	3096200285	28mm x 25M	1
	3096200295	28mm x 50M	1

#### EASY-LAY POLYBUTYLENE BARRIER PIPE (GREY)

	CODE	DESCRIPTION	QTY
	3096200030	PB 25m coil 10mm	1
	3096200040	PB 50m coil 10mm	1
	3096200120	PB 25m coil 15mm	1
	3096200130	PB 50m coil 15mm	1
	3096200140	PB 100m coil 15mm	1
	3096200230	PB 25m coil 22mm	1
	3096200250	PB 50m coil 22mm	1
	3096200150	PB 3m length 15mm	20
	3096200260	PB 3m length 22mm	20
	3096200280	28mm x 25M	1
	3096200290	28mm x 50M	1

#### EASY-LAY PIPE INSERTS

	CODE	DESCRIPTION	QTY
	3095100855	10mm Plastic Insert	100
	3095100860	15mm Plastic Insert	100
	3095100865	22mm Plastic Insert	100
	3095100792	28mm Plastic Insert	1

# QUAL-PEX BARRIER PIPE



Qual-PEX Barrier Pipe is available in a variety of coils and straight lengths. Available in 10mm, 15mm, 22mm & 28mm. This extensive range of pipe offers installers the solutions they need. With full BS7291-Class S and WRAS approvals, specifiers & installers can have full confidence in the quality and reliability of this range. Plus comes with an Unbeatable 50 Year Guarantee.

**Tough, Dependable, Flexible** – Our Qual-Pex Pipe is amazingly reliable & incredibly efficient.

**Highest Quality Standard** – Our Qual-Pex Pipe is manufactured according to the most stringent standards and is tested & certified – according to BS7291 class S and DIN 16892.

**Compatible** – Qual-Pex Pipe is compatible with other BS7291 specified systems.

**Available in** – a variety of coil lengths and straight lengths. It is manufactured in 10mm, 15mm, 22mm & 28mm.

**EVOH Barrier Layer** – incorporates an EVOH oxygen diffusion barrier layer sandwiched within the wall of the pipe, which protects the layer from physical and UV damage. The EVOH layer renders the pipe virtually impervious to gases. Barrier complies with DIN 4726.

**Market Leading Guarantee** – 50 Year Guarantee. Specifiers & installers can have full confidence in the quality and reliability of this range.




## QUAL-PEX HIGH DENSITY POLYETHYLENE BARRIER PIPE (WHITE)

	CODE	DESCRIPTION	QTY
 	3096100060	10mm x 50M	1
	3096100070	10mm x 100M	1
	3096100100	15mm x 25M	1
	3096100110	15mm x 50M	1
	3096100120	15mm x 100M	1
	3096100150	22mm x 25M	1
	3096100160	22mm x 50M	1
	3096100180	28mm x 25M	1
	3096100190	28mm x 50M	1
	3096100080	15mm x 3M	20
	3096100130	22mm x 3M	20
	3096100170	28mm x 3M	10

## PEX PIPE INSERTS

Inserts for PEX are grey in colour.

	CODE	DESCRIPTION	QTY
	3095100855	Insert for PEX/PB 10mm	100
	3095100840	Insert for PEX 15mm	100
	3095100845	Insert for PEX 22mm	100

# QUAL-PE-RT – RAISED TEMPERATURE PE BARRIER PIPE



Qual-PE-RT is used extensively for underfloor heating applications. With flexible and lightweight characteristics, installation is fast and efficient with minimal maintenance required, making it an ideal system for underfloor heating systems. The pipe guarantees leak free performance with a smooth internal structure for improved flow, reduced pressure loss and deposit formation.

- **Lightweight and Flexible**

PE-RT is lightweight and extremely flexible, bends easily into place for fast installation

- **Oxygen Diffusion Barrier**

5 layer construction, contains EVOH layer protecting system components from corrosion

- **Manufactured & tested to ISO 22391 and ISO 17455**
- **Complies with ISO 10508 user application classes 4 & 5 (area heating / radiator integration) for a service life of 50 years.**
- **Oxygen barrier within the pipe wall complies with ISO 17455.**
- **Maximum service conditions of 70°C at 6 bars.**

	CODE	DESCRIPTION	QTY
	3096600320	16mm x 2mm x 100m PE-RT Coil	1
	3096600050	16mm x 2mm x 200m PE-RT Coil	1
	3096600080	16mm x 2mm x 400m PE-RT Coil	1
	3096600250	20mm x 2mm x 400m PE-RT Coil	1



# PIPE IN PIPE




## FEATURES


- PEX or Easy-Lay PB Pipe supplied with conduit factory applied
- Simply uncoil, cut and install - No messy installation of the pipe in the conduit
- Saves you time, money and an environment where the chance of leaks are all but eliminated
- Ideal for installation in screeds and walls where there is a standard requirement to be able to withdraw the Pipe after installation
- Corrugated pipe diameter is 25mm on all sizes.



### QUAL-PEX PIPE IN PIPE

	CODE	SIZE	QTY
	3096100460	15mm x 50M	1
	3096100470	15mm x 100M	1
	3096100480	22mm x 25M	1
	3096100490	22mm x 50M	1

### EASY-LAY PB PIPE IN PIPE

	CODE	DESCRIPTION	QTY
	3096201020	15mm x 50M	1
	3096201030	15mm x 100M	1
	3096201040	22mm x 25M	1
	3096201050	22mm x 50M	1



# QUAL-PEX ECO DUO



## PRE-INSULATED AND DUCTED QUAL-PEX FOR LOCAL & DISTRICT HEATING.

### Applications:

- Air/Water Heat Pumps.
- Geothermal heat Pumps.
- Wood Pellet Boilers.
- Biomass & Biogas Boilers.
- External Gas and Oil Boilers
- & many more

### Benefits:

- Metric size pipe
- Use with standard metric compression fittings & Qual-Pex inserts
- 50 year guarantee.
- Available in coils of 100m.
- Coils can be cut to order.
- Range of end caps & junction covers available.

### Product Description:

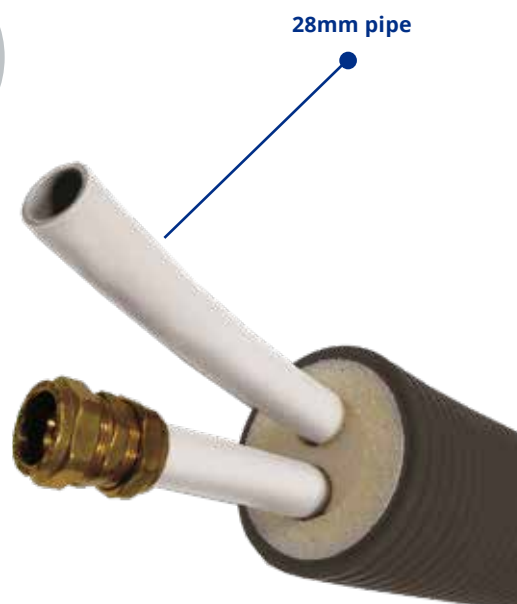
Two pre-insulated, Qual-PEX Barrier Pipes encapsulated in 125mm of high performance insulation protected within a corrugated PE-HD twin wall outer casing for maximum protection. Delivering industry leading thermal insulation properties using leading plumbing and heating pipe.

Qual-PEX eco duo has been designed to simplify and speed up installation by utilising standard size fittings and pipe and to greatly enhance energy conservation, thus reducing energy costs.

### The Insulation:

The insulation of Qual-PEX ECO Duo consists of micro-cellular cross-linked polyethylene foam with a closed cellular structure, permitting low water vapour diffusion with good insulation resistance to extreme temperatures.

Moreover, Qual-PEX ECO Duo maintains these high insulation properties over time. This is due to the superior characteristics of



the cross linked PE foam, compared to other insulation materials (e.g. PUR foam) which show a decline in their insulation capabilities over time. Its unique moving layers design allows maximum flexibility and very easy installation.

### Installation:

There are no special tools or fittings required as both sizes of Qual-PEX pipes will fit with standard compression fittings that can be bought in any Hardware outlet. Simply dig your trench, lay the pipe in a serpentine pattern in the trench and back fill with sandy clay.

Allow 1% of the length of the pipe for expansion and contraction. Best practice would be to anchor the pipes at all fitting locations.

PERFORMANCE CHARACTERISTICS	TEST METHOD	VALUE
Density:	ISO 845	30kg/m3
Tensile strength:	ISO 1926	240Kpa
Water Absorption After 28 Days:	DIN 53828	<1.04% Vol
Thermal Conductivity:	DIN52612	10°C:0.040W/mK 40°C:0.0365W/mK

	CODE	DESCRIPTION	SELLING UNIT PER METER
	3095100530	28mm	1
	3095100591	Dust Caps	1

# QUAL-PLAST MDPE & GAS PIPE

## QUAL PLAST BLUE M.D.P.E (PE80)

Manufactured and certified to EN12201 specification. Blue and Black Medium Density (PE80) Polyethylene Service Pipes for Potable Water and Industrial uses manufactured in accordance to EN12201 Specification. Also manufactured to BSEN12201 with BS Kitemark.



PRODUCT CODE	DESCRIPTION
3096300000	20mm x 25m
3096300010	20mm x 50m
3096300020	20mm x 100m
3096300030	20mm x 150m
3096300040	25mm x 25m
3096300050	25mm x 50m
3096300060	25mm x 100m
3096300070	25mm x 150m
3096300080	32mm x 25m
3096300090	32mm x 50m

PRODUCT CODE	DESCRIPTION
3096300100	32mm x 100m
3096300110	32mm x 150m
3096300150	50mm x 25m
3096300160	50mm x 50m
3096300170	50mm x 100m
3096300180	50mm x 150m
3096300190	63mm x 25m
3096300200	63mm x 50m
3096300210	63mm x 100m
3096300220	63mm x 150m

## QUAL-GAS (PE80) YELLOW MDPE PIPE

Manufactured and certified to EN1555 and GIS/PL2-2 specifications (yellow). Yellow Medium Density (PE80) Polyethylene Gas Pipes manufactured in accordance to IS EN1555 Specification.

\*Sizes 20mm - 63mm manufactured with BS Kitemark to GIS/PL-2.

PRODUCT CODE	DESCRIPTION
3096300410	20mm x 50m
3096300420	20mm x 100m
3096300430	25mm x 50m
3096300440	25mm x 100m
3096300450	32mm x 50m
3096300460	32mm x 100m
3096300470	63mm x 50m



# QUALITY, BUILT IN

**PIPELIFE**   
always part of your life



**Long-lasting, safe and reliable products have always been the hallmark of the Pipelife name.**

Pipelife is one of Europe's leading producers of plastic pipe systems. Pipelife has grown to become a key supplier of innovative products in the plumbing, water distribution, gas distribution and renewable energy industrial sectors.

Employing in excess of 3,700 people in 28 manufacturing facilities across 24 countries, Pipelife is a company with annual revenues of €1bn a year. Pipelife is a wholly owned subsidiary of the Wienerberger Group, with group revenues of over €4bn per year and 16,000 employees worldwide.

## **An Icon of Quality**

On every product we make, you'll find the Pipelife monogram proudly stamped, as a mark of trusted authenticity and quality. And behind this mark is the most rigorous design, engineering and testing process that's helped build our trusted reputation for over 50 years. For complete quality control, we engineer everything in-house at Pipelife, including our own moulds, tools and machinery.

## **A Lasting Legacy**

Long lasting quality has always been valued by our customers. But now it's a key attribute for the built environment, that's coming under ever increasing pressure to make sustainability its number one priority.

At Pipelife, we make products that help manage precious resources. Our aim is to minimise our impact on the environment and to grow responsibly, continually investing in reducing our carbon footprint across our facilities.

Quality and innovation continue to be the terms that define our philosophy and this is reflected in the range of products and systems that we manufacture to this day.

## **Put to the Test**

To ensure performance at the very highest standards we have a state-of-the-art test lab. Here we batch check the quality of all our products. Pressure, thermal, endurance and impact testing are carried out, along with a full range of approvals to gain relevant accreditation.

## **Quality and Environmental Management Systems**

Our goal is to produce the most environmentally friendly products, by lowering our energy and water use, raw materials and reducing our CO2 emissions. With quality management systems and environment measures established in all our production sites, our factories are certified according to ISO 9001 (Quality Management System), with a growing number of production locations meeting ISO 14001 Standards (Environmental Management System).



# PVC FITTINGS



## **FIXED SEALING RING**

No possibility to displace the sealing ring.



## **HIGH CHEMICAL RESISTANCE**

Both for aggressive sewage and foul and storm water.



## **HEAT RESISTANT**

Resistant to temperatures up to -45°C for constant flow.



## **EASY TO SHIP**

Pipelife fittings are very light and yet have high stiffness making them easy to transport and place, which speeds up assembling.



## **CERTIFIED TO STANDARD EN 1401**



## **SUPER SIZE SEALING RING VERSUS THE COMPETITION**

# EN 1401 CERTIFIED



# 160MM (6") & 110MM (4") - SEWER FITTINGS



**15° SINGLE SOCKET BEND**

CODE	DESCRIPTION	PACK QTY	PALLET QTY
1196900075	110mm	10	700
1196900082	160mm	6	240



**90° SINGLE SOCKET BEND**

CODE	DESCRIPTION	PACK QTY	PALLET QTY
1196900137	110mm	15	375
1196900144	160mm	5	150



**15° DOUBLE SOCKET BEND**

CODE	DESCRIPTION	PACK QTY	PALLET QTY
1196900072	110mm	10	700
1196900080	160mm	6	240



**90° SINGLE SOCKET REST BEND**

CODE	DESCRIPTION	PACK QTY	PALLET QTY
1196900132	110mm	12	300



**30° SINGLE SOCKET BEND**

CODE	DESCRIPTION	PACK QTY	PALLET QTY
1196900094	110mm	18	720
1196900101	160mm	6	240



**90° DOUBLE SOCKET BEND**

CODE	DESCRIPTION	PACK QTY	PALLET QTY
1196900134	110mm	15	375
1196900142	160mm	5	150



**30° DOUBLE SOCKET BEND**

CODE	DESCRIPTION	PACK QTY	PALLET QTY
1196900091	110mm	15	600
1196900099	160mm	6	240



**90° DOUBLE SOCKET REST BEND**

CODE	DESCRIPTION	PACK QTY	PALLET QTY
1196900131	110mm	12	300



**45° SINGLE SOCKET BEND**

CODE	DESCRIPTION	PACK QTY	PALLET QTY
1196900113	110mm	24	720
1196900122	160mm	6	210



**DUAL CAP PLUG**

CODE	DESCRIPTION	PACK QTY	PALLET QTY
1196900512	110mm	75	2250
1196900516	160mm	35	1050



**45° DOUBLE SOCKET BEND**

CODE	DESCRIPTION	PACK QTY	PALLET QTY
1196900110	110mm	24	720
1196900120	160mm	6	210



**DOUBLE SOCKET COUPLING**

CODE	DESCRIPTION	PACK QTY	PALLET QTY
1196901162	110mm	24	960
1196901166	160mm	12	360

# 160MM (6") & 110MM (4") - SEWER FITTINGS



**REDUCING COUPLING**

CODE	DESCRIPTION	PACK QTY	PALLET QTY
1196901332	110 x 160mm	12	420



**SLIP COUPLER**

CODE	DESCRIPTION	PACK QTY	PALLET QTY
1196900811	110mm	24	960
1196900815	160mm	12	360



**45° DOUBLE SOCKET BRANCH**

CODE	DESCRIPTION	PACK QTY	PALLET QTY
1196901244	110mm	10	250
1196901265	160mm	5	100
1196901259	160 x 110mm	5	125



**45° TREBLE SOCKET BRANCH**

CODE	DESCRIPTION	PACK QTY	PALLET QTY
1196901240	110mm	10	250
1196901263	160mm	5	100
1196901257	160 x 110mm	5	125



**90° DOUBLE SOCKET BRANCH**

CODE	DESCRIPTION	PACK QTY	PALLET QTY
1196901279	110mm	10	350
1196901300	160mm	5	100
1196901294	160 x 110mm	5	150



**90° TREBLE SOCKET BRANCH**

CODE	DESCRIPTION	PACK QTY	PALLET QTY
1196901275	110mm	10	350
1196901298	160mm	6	120
1196901292	160 x 110mm	5	125



**GULLY & GRID**

CODE	DESCRIPTION	PACK QTY	PALLET QTY
1195001651	110mm	5	225



**BOTTLE GULLIES 110MM**

CODE	DESCRIPTION	PACK QTY	PALLET QTY
1195002008	Bottle Gully	5	150
1195002009	BOTTLE GULLY + BACK INLET	5	150



**UNIVERSAL GULLY TRAP 110MM**

CODE	DESCRIPTION	PACK QTY	PALLET QTY
1196901136	Universal Gully Trap	12	300
1196900990	Hopper & Grid	15	1050
1196900218	Square Grid	60	
1195001805	110mm Adjustable Gully	8	160

# 110MM (4") BLACK SOIL FITTING ABOVE GROUND SOIL SYSTEM EN 1401 - BLACK



**45° SINGLE SOCKET BEND**

CODE	DESCRIPTION	PACK QTY	PALLET QTY
1196900114	110mm	24	720



**90° TREBLE SOCKET BRANCH**

CODE	DESCRIPTION	PACK QTY	PALLET QTY
1196901276	110mm	10	350



**45° DOUBLE SOCKET BEND**

CODE	DESCRIPTION	PACK QTY	PALLET QTY
1196900111	110mm	24	720



**90° DOUBLE SOCKET BRANCH**

CODE	DESCRIPTION	PACK QTY	PALLET QTY
1196901278	110mm	10	350



**90° SINGLE SOCKET BEND**

CODE	DESCRIPTION	PACK QTY	PALLET QTY
1196900138	110mm	15	375



**90° SHORT ACCESS BEND**

CODE	DESCRIPTION	PACK QTY	PALLET QTY
1195001682	110mm	12	240



**90° DOUBLE SOCKET BEND**

CODE	DESCRIPTION	PACK QTY	PALLET QTY
1196900135	110mm	15	375



**ACCESS CAP**

CODE	DESCRIPTION	PACK QTY	PALLET QTY
1195000430	110mm	20	1400



**DOUBLE SOCKET COUPLING**

CODE	DESCRIPTION	PACK QTY	PALLET QTY
1196901163	110mm	24	960



**PIPE CLIP**

CODE	DESCRIPTION	PACK QTY	PALLET QTY
1196900827	110mm	12	3500



**SLIP/REPAIR COUPLING**

CODE	DESCRIPTION	PACK QTY	PALLET QTY
1196900812	110mm	24	960



**BLACK COWL**

CODE	DESCRIPTION	PACK QTY	PALLET QTY
3095401500	110mm	10	1400



**45° TREBLE SOCKET BRANCH**

CODE	DESCRIPTION	PACK QTY	PALLET QTY
1196901241	110mm	10	250

# UNIVERSAL ACCESS JUNCTION SYSTEM

## 1 ACCESS JUNCTION = 16+ CONNECTION POSSIBILITIES

### FEATURES

- A Multi-Purpose Access Junction base with options to suit every requirement
- Quick and easy installation
- Robust but light base for ease of use
- Single level flow system designed to minimise the risk of drainage blockage
- Blanking Plugs supplied for different option system flow profiles
- Access Junctions are a proven product allowing access for inspection or rodding in sewer pipe runs
- For 110mm (4") pipe Material: Brown PVC-u Weight: 4kg approx
- AJ Cover and Frame also available (sold separately)

**Manufactured  
& Tested  
to EN13598  
Requirements**





- Fixed Sealing ring.  
No possibility to displace the sealing ring.
- High chemical resistance Both for aggressive sewage and foul and storm water.
- Heat Resistant.  
Resistant to temperatures up to 45°C for constant flow.
- Easy to Ship
- Pipelife fittings are very light and yet have high stiffness making them easy to transport and place, which speeds up assembling.
- Super Size Sealing ring Versus the competition.



315mm Square Cover and Frame with rubber ring seal and screws for complete watertight drainage system.



Adjustable Tilt Frame feature for ease of alignment on uneven pavement surfaces.  
Complete with Heavy Duty 'O' Ring.



Stackable Risers with a cutting indicator for extra height requirements  
Height = 169mm  
Diameter = 315mm

CODE	SIZE	CONTAINER QTY
1195001684	AJ 6 Way	20
1195001686	Cover & Frame	63
1196900475	Riser	51

# GENERAL TERMS & CONDITIONS OF SUPPLY

## CARRIAGE AND DELIVERY

Carriage on a three day service is free of charge on orders exceeding £300 net. PVC carriage is FREE on orders exceeding £1000 net.

Carriage on orders under £300 net is £15.50 (maximum three days delivery unless advised) Pipelife UK aims to deliver faster than 3 days but do not guarantee that we can unless you have ordered express delivery.

Express delivery is charged at cost, please enquire.

## RETURNS POLICY

All claims relating to delivery discrepancies must be advised to Pipelife UK within 7 working days of the goods being received or collected.

All returns must be advised to our Sales Office prior to return by fax or email with your original order number/delivery note number. Any goods no longer required may be returned to Pipelife UK at our discretion but will attract a restocking fee. In addition, the goods must be returned within 30 days of the date of original invoice.

The re-stocking fee of 25% will be deducted from the credit note to cover the cost of processing the return. All goods returned must be in a pristine and resaleable condition with undamaged packaging. Failure to do so will result in re-packaging costs being charged in addition to the re-stocking fee.

Return freight charges are the responsibility of the returning company.

Please note that Debit Notes will not be accepted by Pipelife UK.

## STANDARDS & GUARANTEE

Pipelife constantly works to meet and exceed the laws and regulations that govern the sector we work in.

Our products/systems conform to a number of third party accredited standards including; ISO 9001:2015, BS EN 12201, BS 7291-1 & 2, GIS/PL2-2,

EN 1555, WRAS approval.

Pipelife guarantees its pipe for 50 years against defect in material or manufacture. This guarantee only applies if products are installed in accordance with the manufacturer's recommendations.



# NOTES

---



**28 manufacturing facilities across 24 countries and growing.**

**We are one of the world's leading providers of plastic pipe  
and heating solutions and we provide current and future generations  
around the world with safe, healthy and carefree living.**